

VENUE INFORMATION PACK

MicDrop

CUBES3122
HAWTHORN

CreativeCubes.Co



A FIRST CLASS VENUE WITH SWAGGER, IN HAWTHORN

A brand new industrial chic event space, Cubes3122 is located within the CreativeCubes.Co building at 600 Glenferrie Rd, Hawthorn.

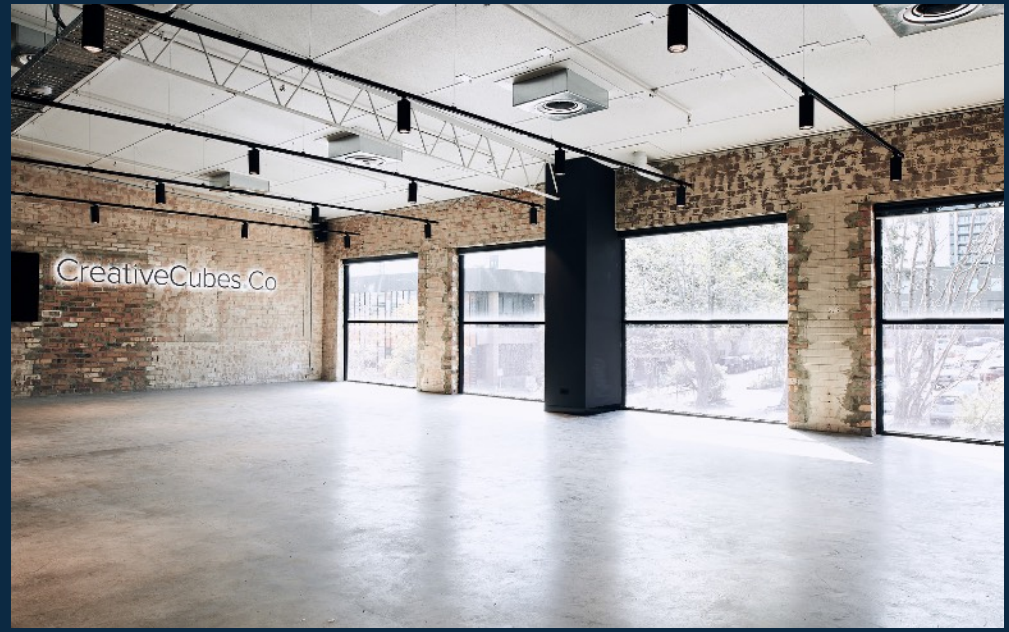
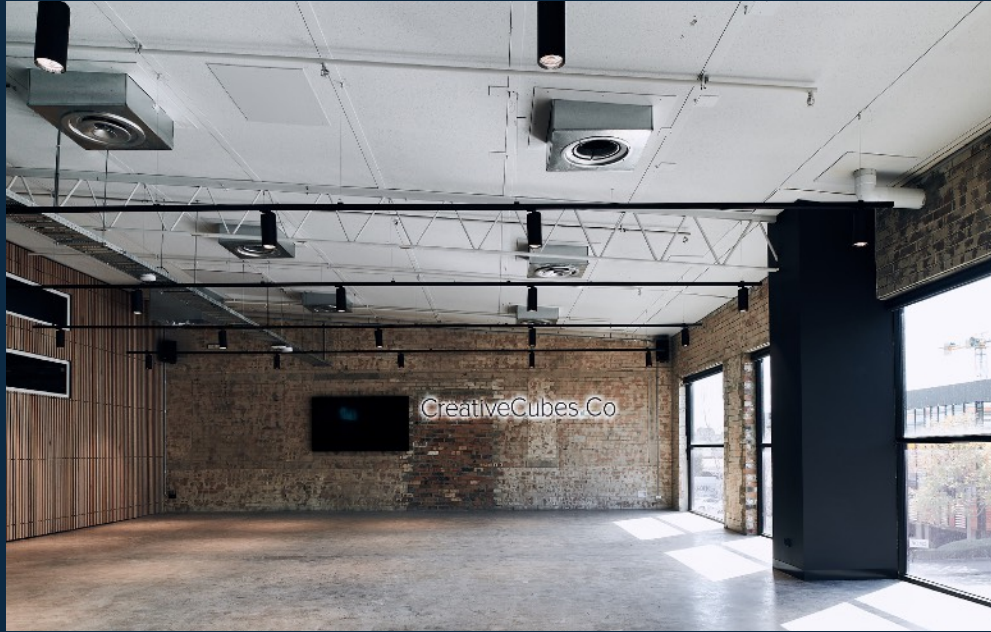
The space features a polished concrete floor, exposed brick and timber panelled walls with plenty of natural light through windows down the length of the space.

With 145sqm including dimmable lighting, breakout boardroom & meetings rooms available on site and dedicated high speed wifi network. The event space is ideal for workshops, team meetings, presentations, briefings, private parties and product launches.

If you are looking for an event space that inspires and isn't your run of the mill venue, Cubes3122 is the place.

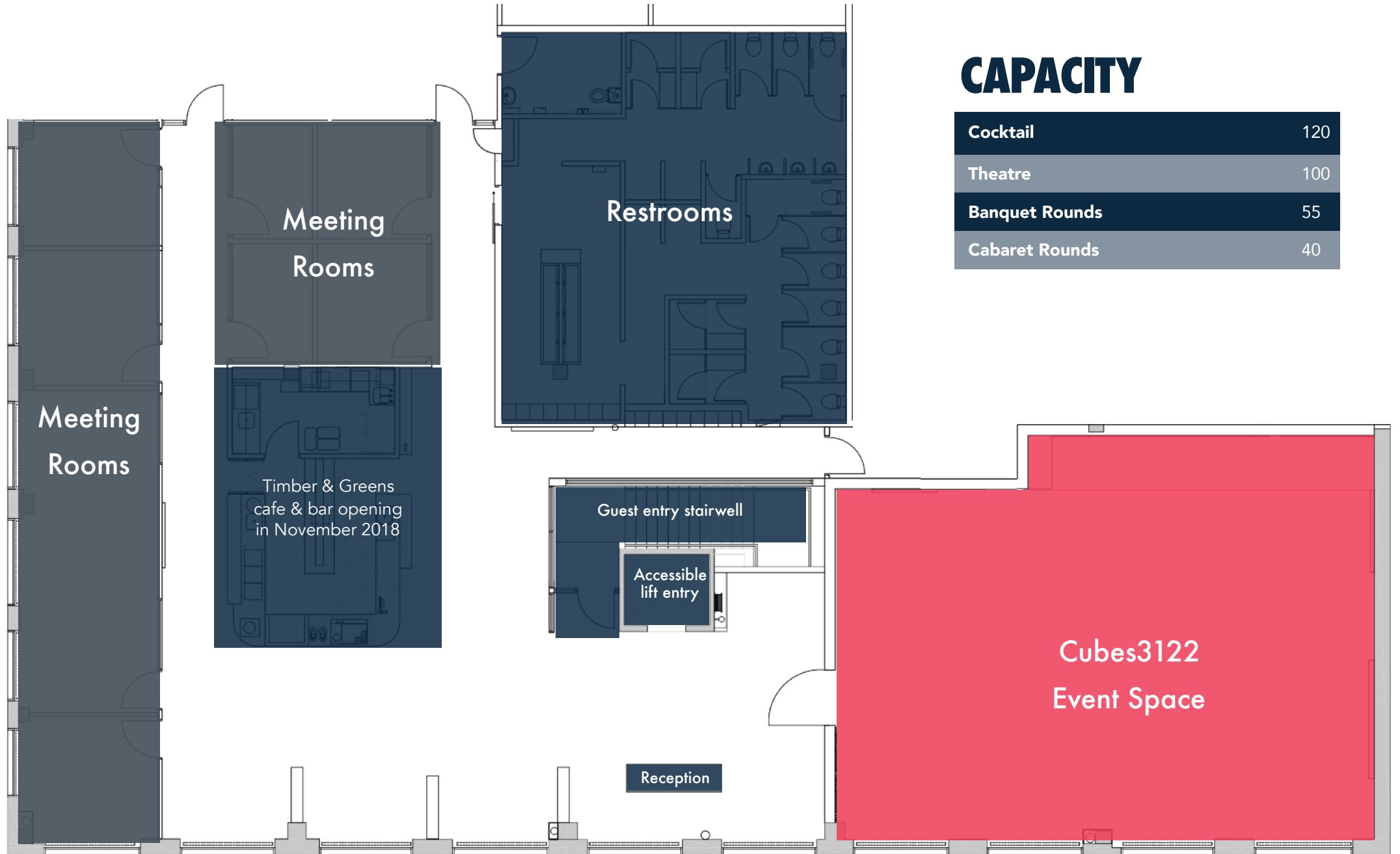
VENUE

MicDrop





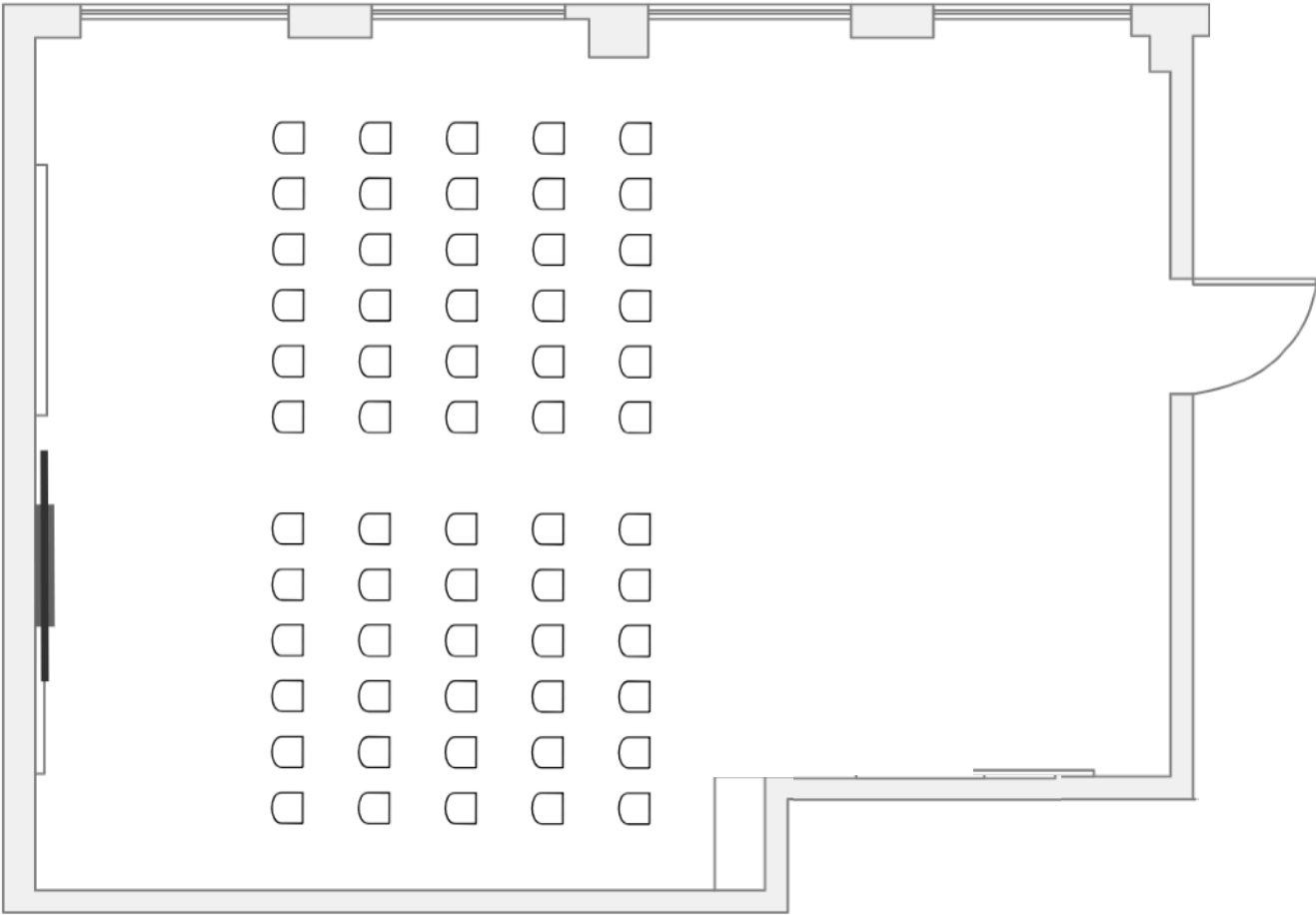




CAPACITY

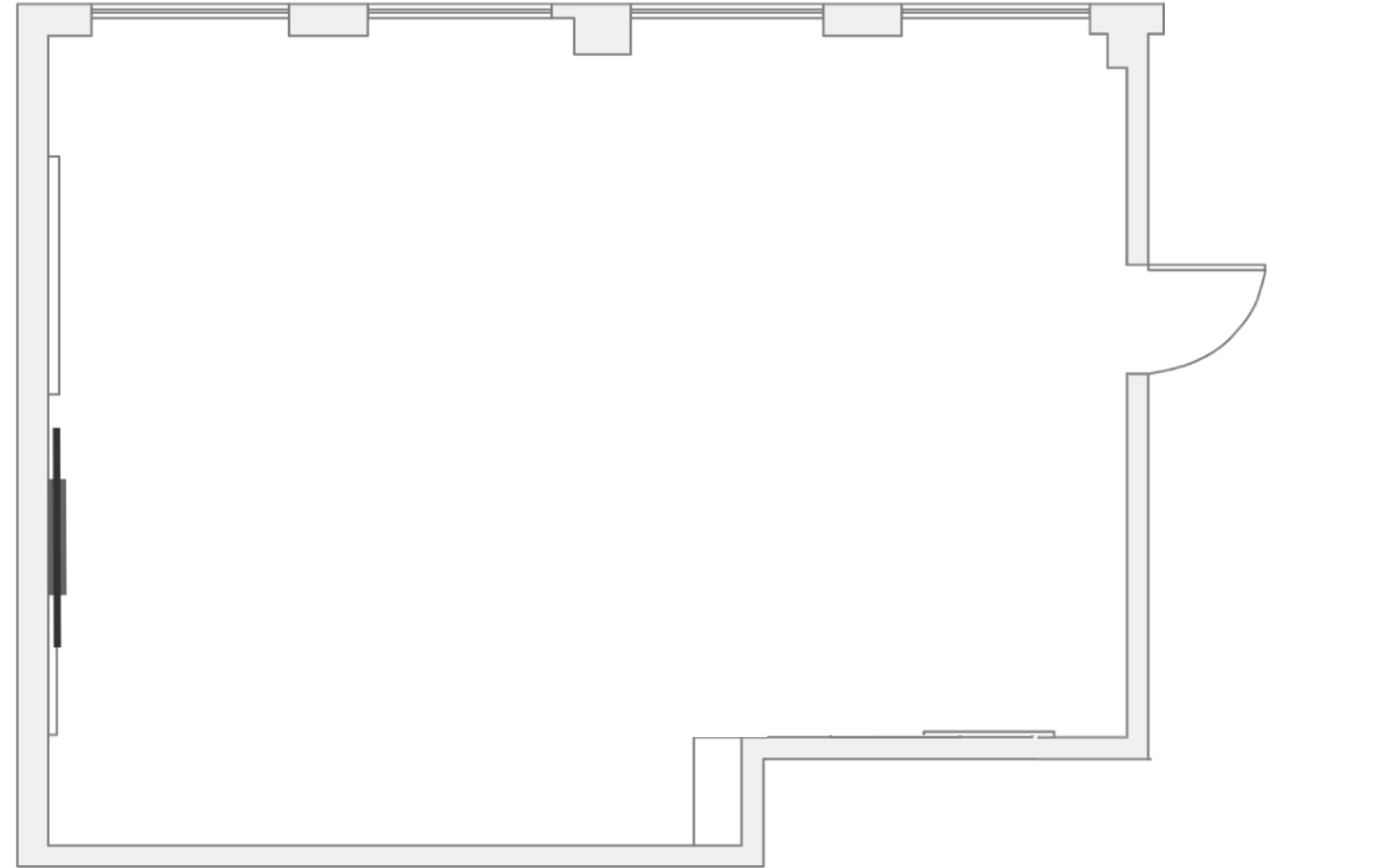
Cocktail	120
Theatre	100
Banquet Rounds	55
Cabaret Rounds	40

DEFAULT 60PAX



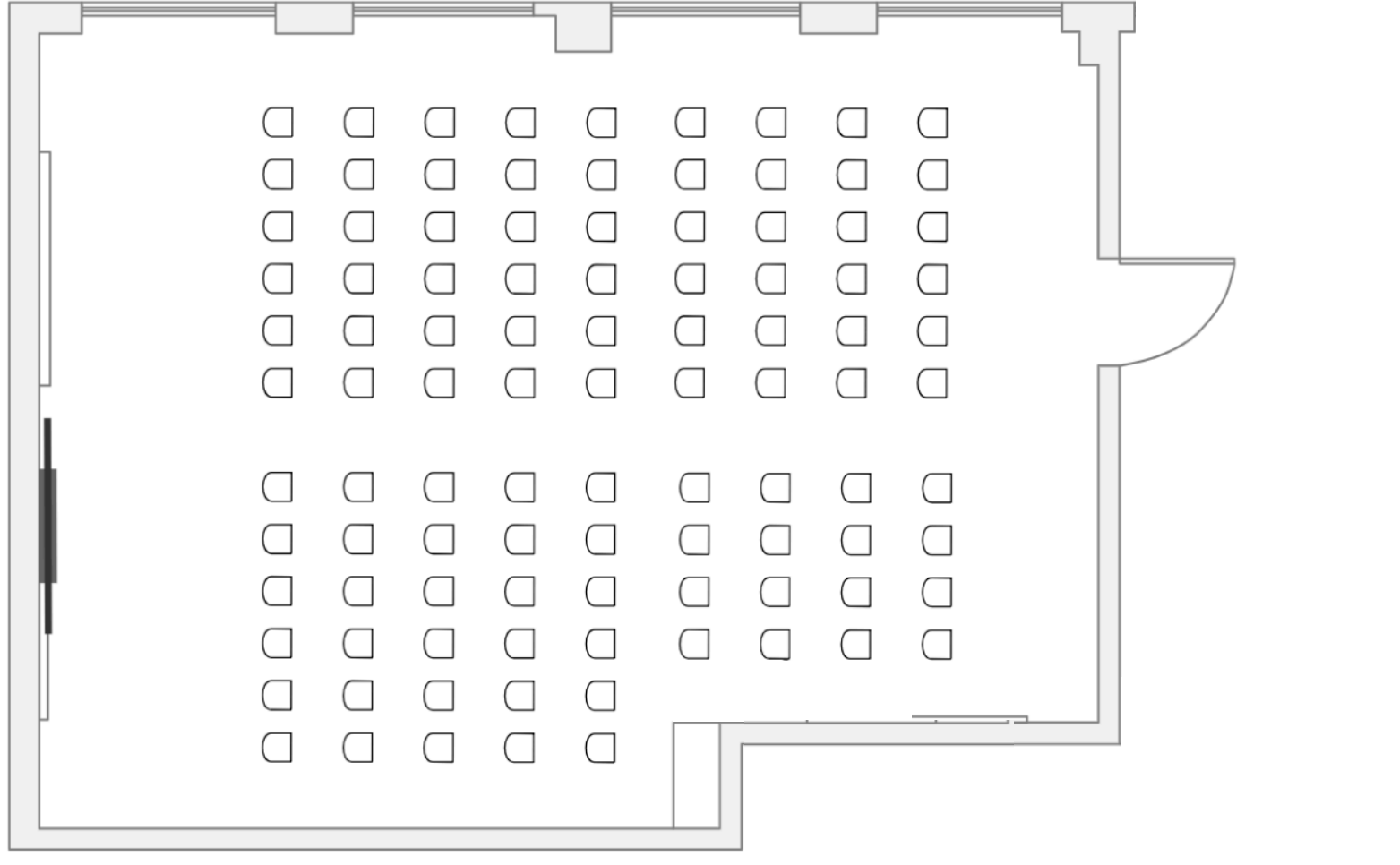
FLOOR PLAN OPTION

COCKTAIL 120PAX



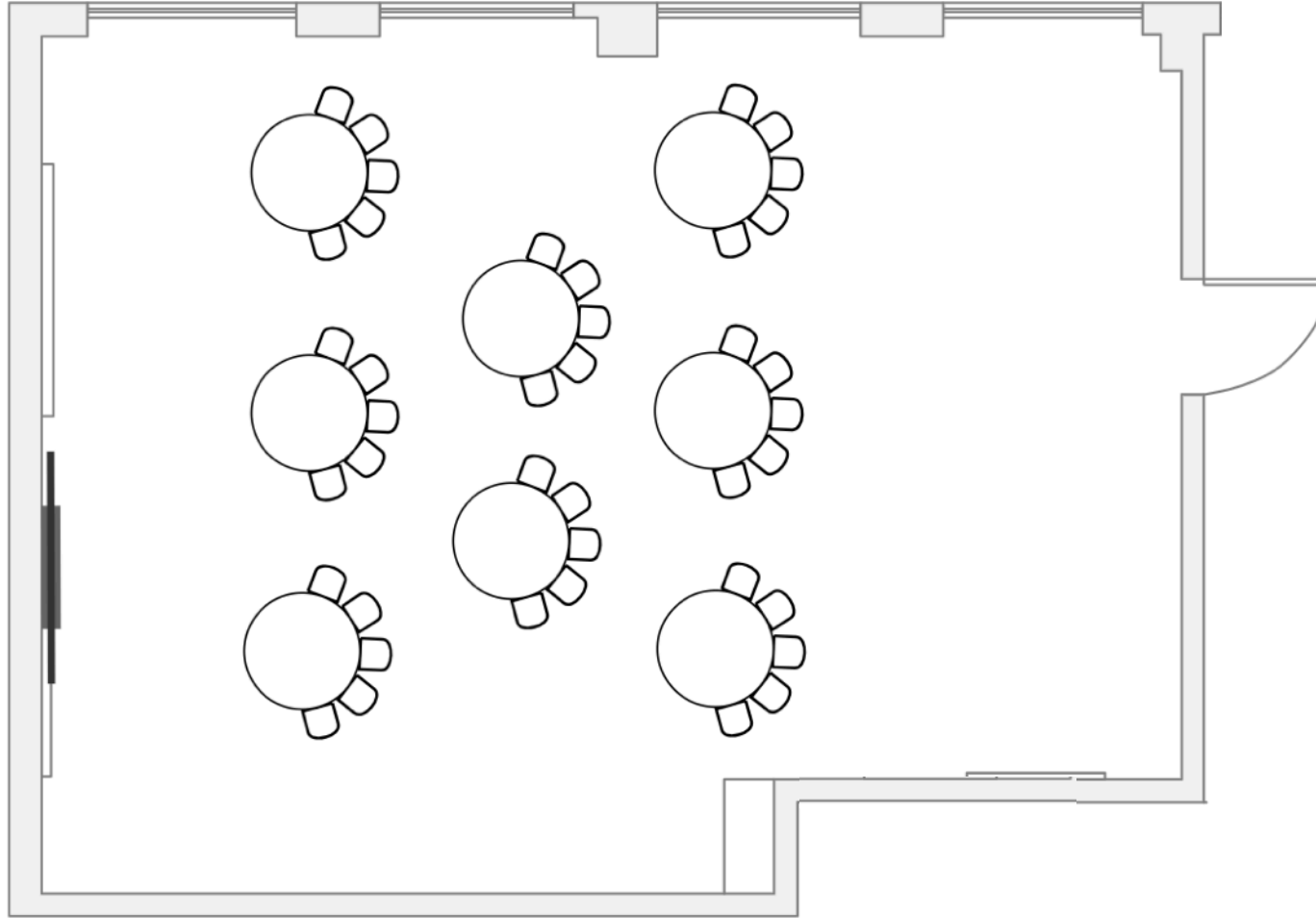
FLOOR PLAN OPTION

THEATRE STYLE 100PAX



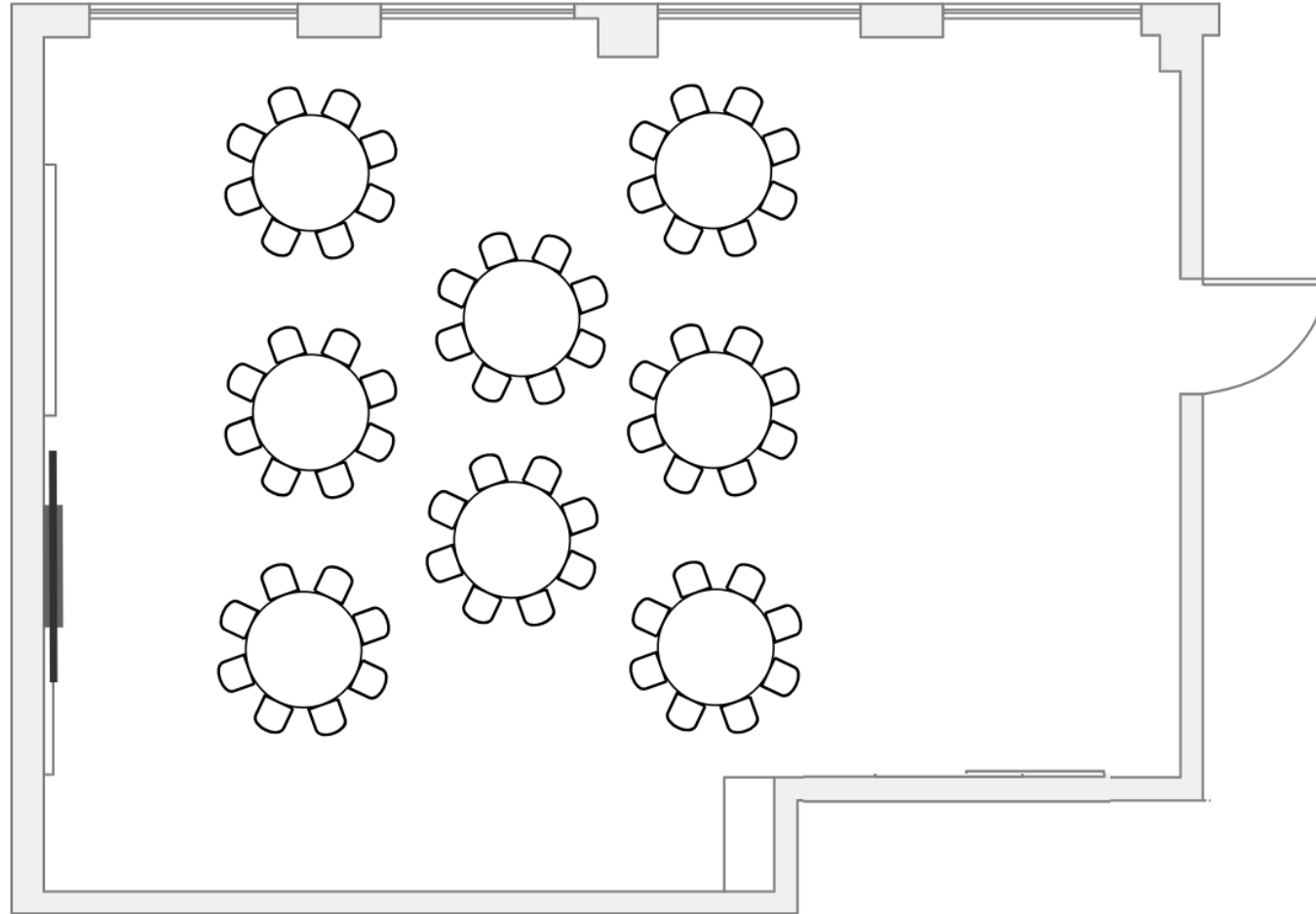
FLOOR PLAN OPTION

CABARET ROUNDS 40PAX



FLOOR PLAN OPTION

BANQUET ROUNDS 64PAX



FLOOR PLAN OPTION

FURNITURE

Sleek custom designed lounge furniture available for use, included in venue hire.

Inventory:

10 x Trestle tables (note below regarding linen)

9 x Round banquet tables (note below regarding linen)

120 x Wooden back leather chairs

Linen:

It is recommended that linen is used to cover the trestle and round tables. The MicDrop team are able to suggest a linen supplier.

Should you require any additional furniture you are welcome to arrange this yourself via our recommended supply partners who know the venue well.



AUDIO VISUAL

MicDrop

AUDIO VISUAL SYSTEM

CreativeCubes Co

AUDIO

- Clarity focused audio system, with in built delays and easy to use operation via a wall panel control screen
- 2 x handheld microphones
- 3.5mm or RCA audio input
- 2 x lapel microphones
- Apple AirPlay wireless playback
- PC/Android Miracast wireless playback

VISION

- 84" 4K scree
- HDMI input, aligned to audio
- Apple AirPlay wireless screen share
- PC/Android Miracast wireless screen share

CONTROL LOCATIONS

- HDMI port front of room, for easy presenter access
- Side of room for front of house operation
- Wireless iPad for roving control of audio and switching vision

RECOMMENDED SUPPLIERS

HIRE EQUIPMENT

Should you require additional furniture, catering equipment, glassware etc for your event then we recommend our hire partner Harry The Hirer. You are also welcome to organise through your own supplier should you prefer.

CATERING

Cubes3122 features access to a communal kitchen, sink, hot and cold running water and power outlets. We recommend our catering partner Cookes Food who can assist with all types of event catering styles or feel free to organise your own.

ADDITIONAL AV EQUIPMENT

Should you require any additional AV equipment we recommend Technical Events who will be able to assist you with all types of AV set ups in our space.

LINEN HIRE

For linen to cover round table and trestles we recommend Simmons Linen Hire.



Craig Garrow

Harry The Hirer

CraigG@harrythehirer.com.au

03 9429-8688

www.harrythehirer.com.au



Elaina Ware

Cookes Food

elaina@cookesfood.com.au

0404 205 295

www.cookesfood.com.au



David Wailes

Technical Events

dave@technicalevents.com.au

03 9372 6886

www.technicalevents.com.au



Simmons Linen

info@linenhiredi.com.au

03 9500 2499

www.simmonslinenhire.com.au

NEED TO KNOW VENUE INFO

7 DAYS

Cubes3122 is available 7 days a week from 8:00am - 12:00am.

RESTROOMS

Male and female restrooms as well as separate accessible restroom.

HEATING & COOLING

Keep your guests comfortable throughout the day with in house heating & cooling system.

LOADING ACCESS

Load is either directly via front doors of building, or via the below ground car park. Please discuss your needs with the Cubes3122 team to find the best option.

ADDRESS

Building C
600 Glenferrie Road, Hawthorn
(enter via Oxley Rd)
VIC 3122

TRAIN

Glenferrie Station

TRAM

Route 16
Manningtree Road Stop
Manningtree Road / Glenferrie Rd Stop

STREET PARKING

Along Glenferrie Road & Oxley Road, fees apply

PAID PARKING

Directly opposite Cubes3122 is large paid parking facility, local council managed.

