

VENUE INFORMATION PACK

MicDrop

CUBES3122
HAWTHORN

CreativeCubes.Co

A FIRST CLASS VENUE WITH SWAGGER, IN HAWTHORN

A brand new industrial chic event space, Cubes3122 is located within the CreativeCubes.Co building at 10 Oxley Road, Hawthorn.

The space features a polished concrete floor, exposed brick and timber panelled walls with plenty of natural light through windows down the length of the space.

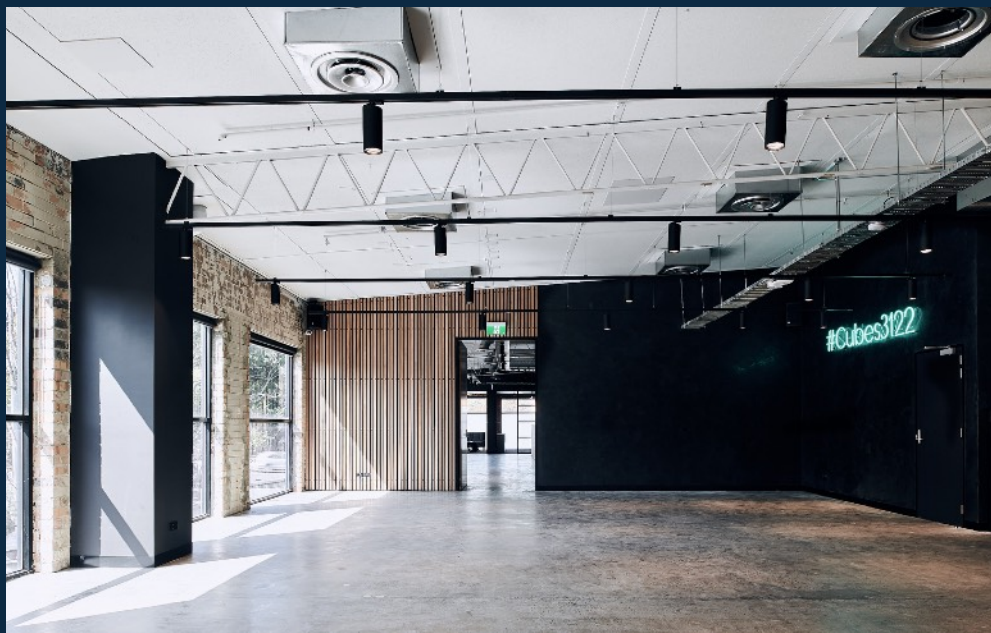
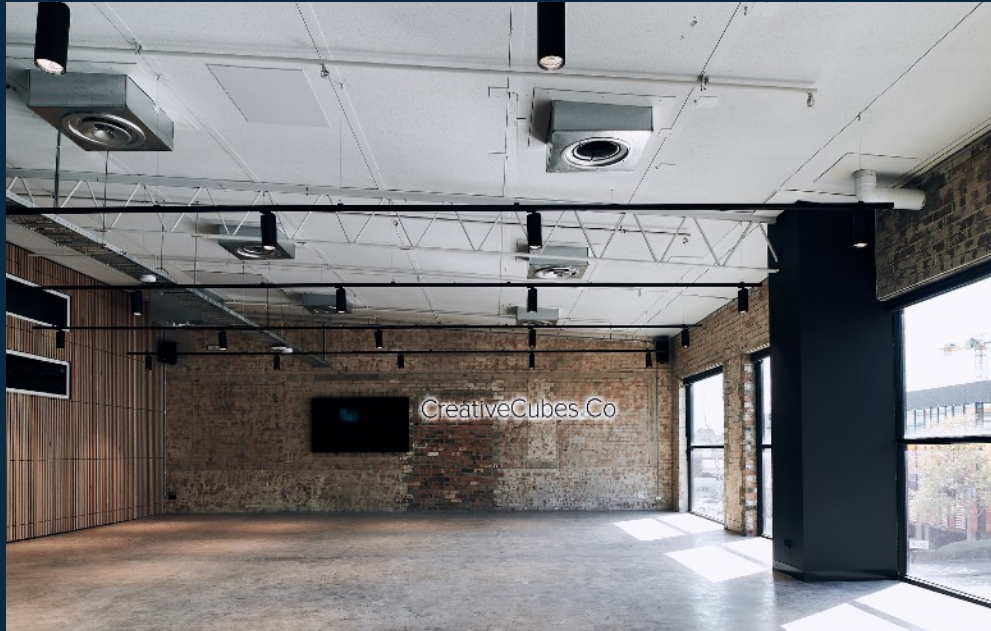
With 145sqm including dimmable lighting, breakout boardroom & meetings rooms available on site and dedicated high speed wifi network. The event space is ideal for workshops, team meetings, presentations, briefings and product launches.

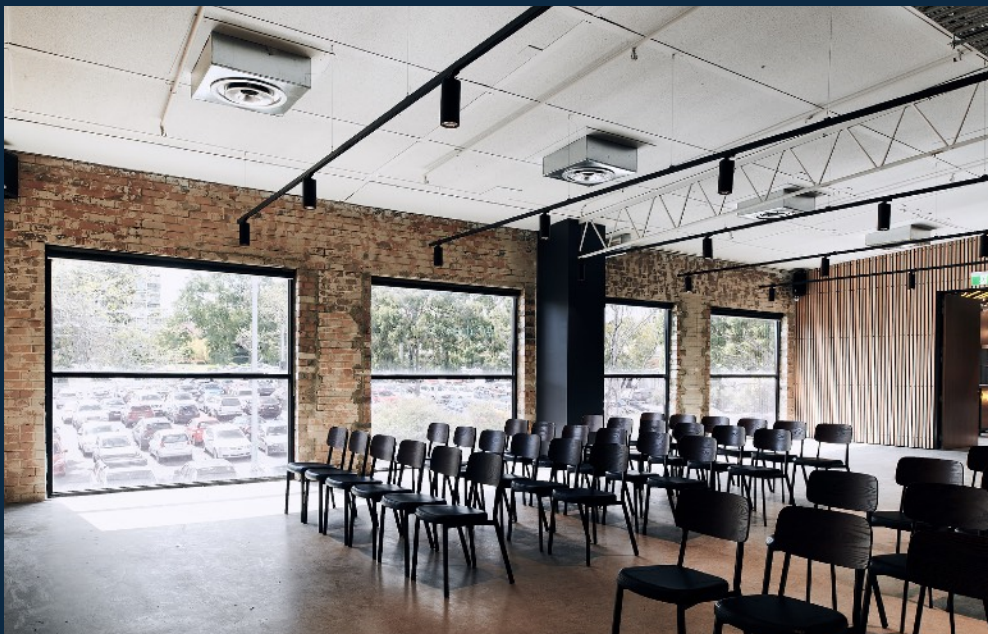
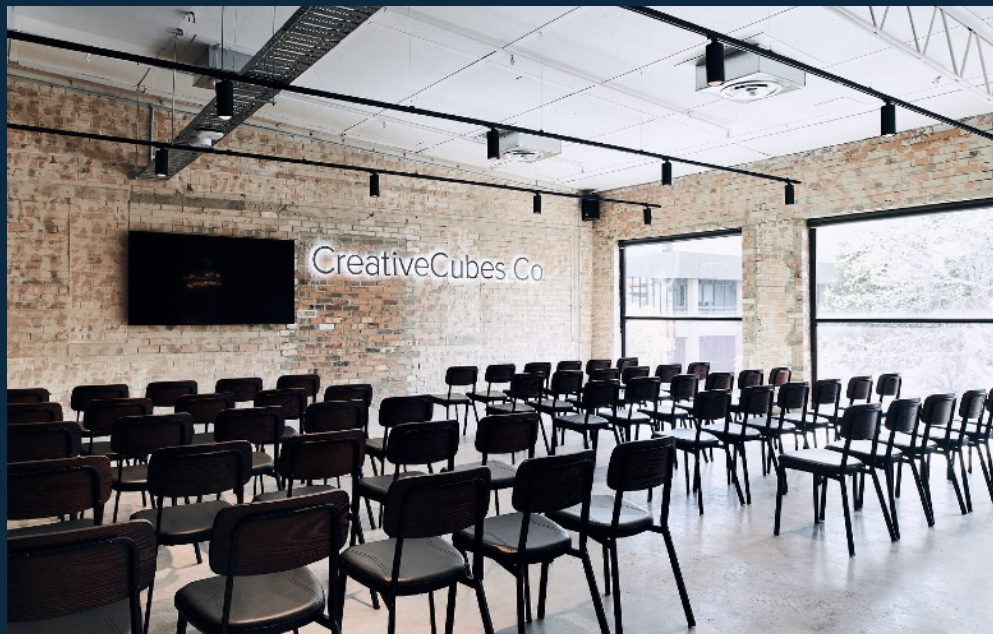
If you are looking for an event space that inspires and isn't your run of the mill venue, Cubes3122 is the place.

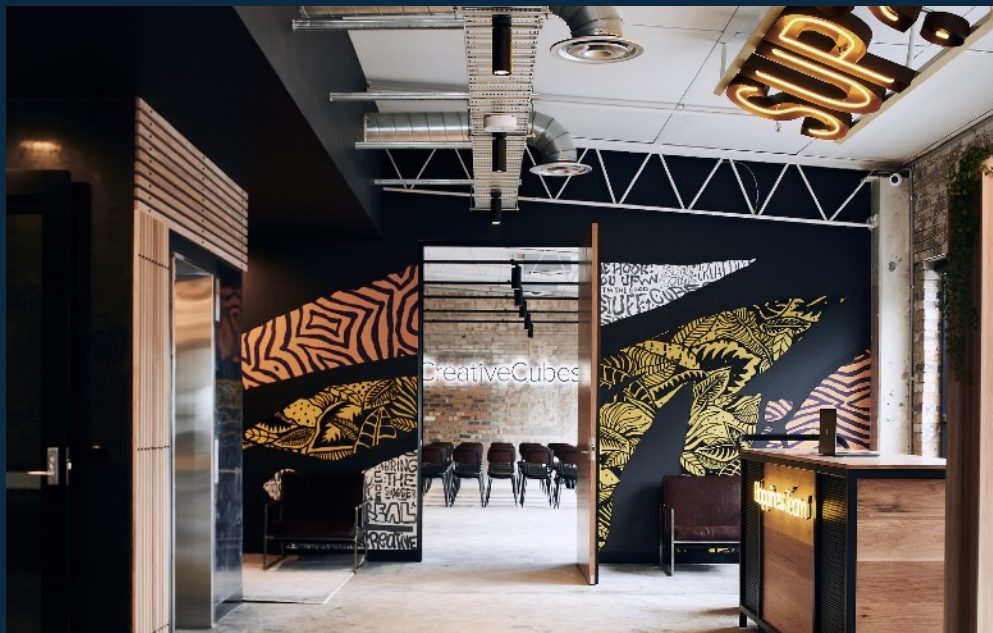


VENUE

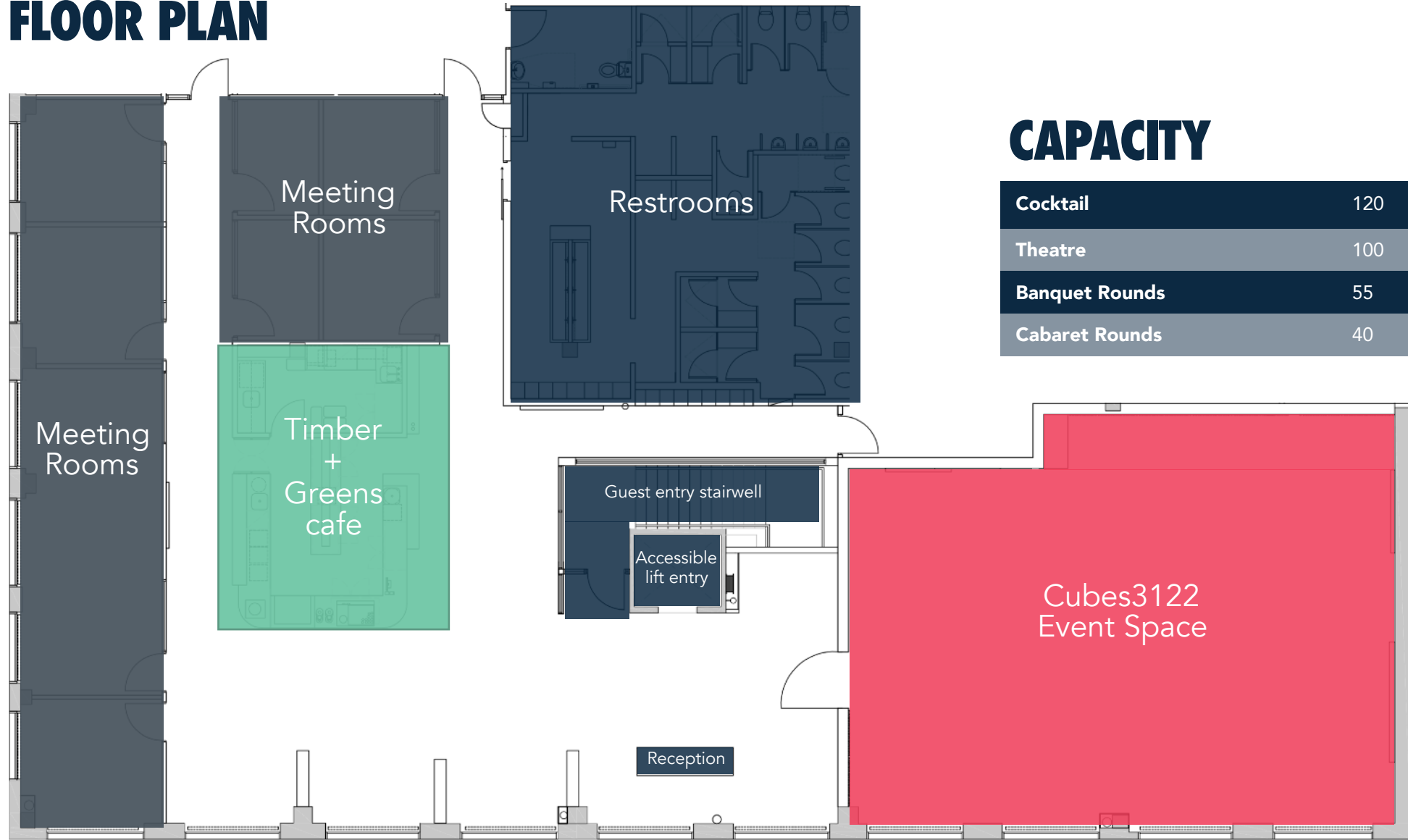
MicDrop



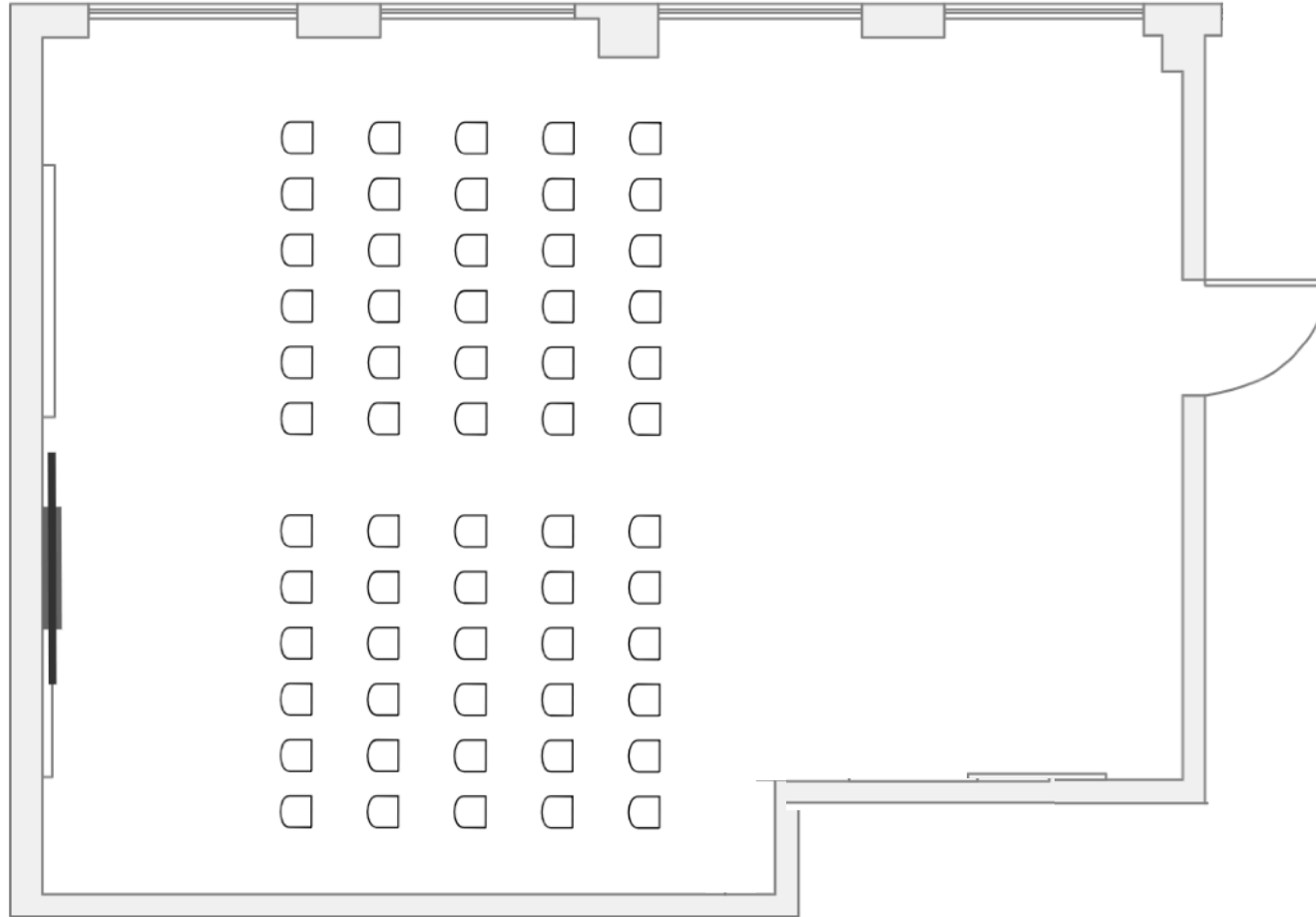




VENUE FLOOR PLAN

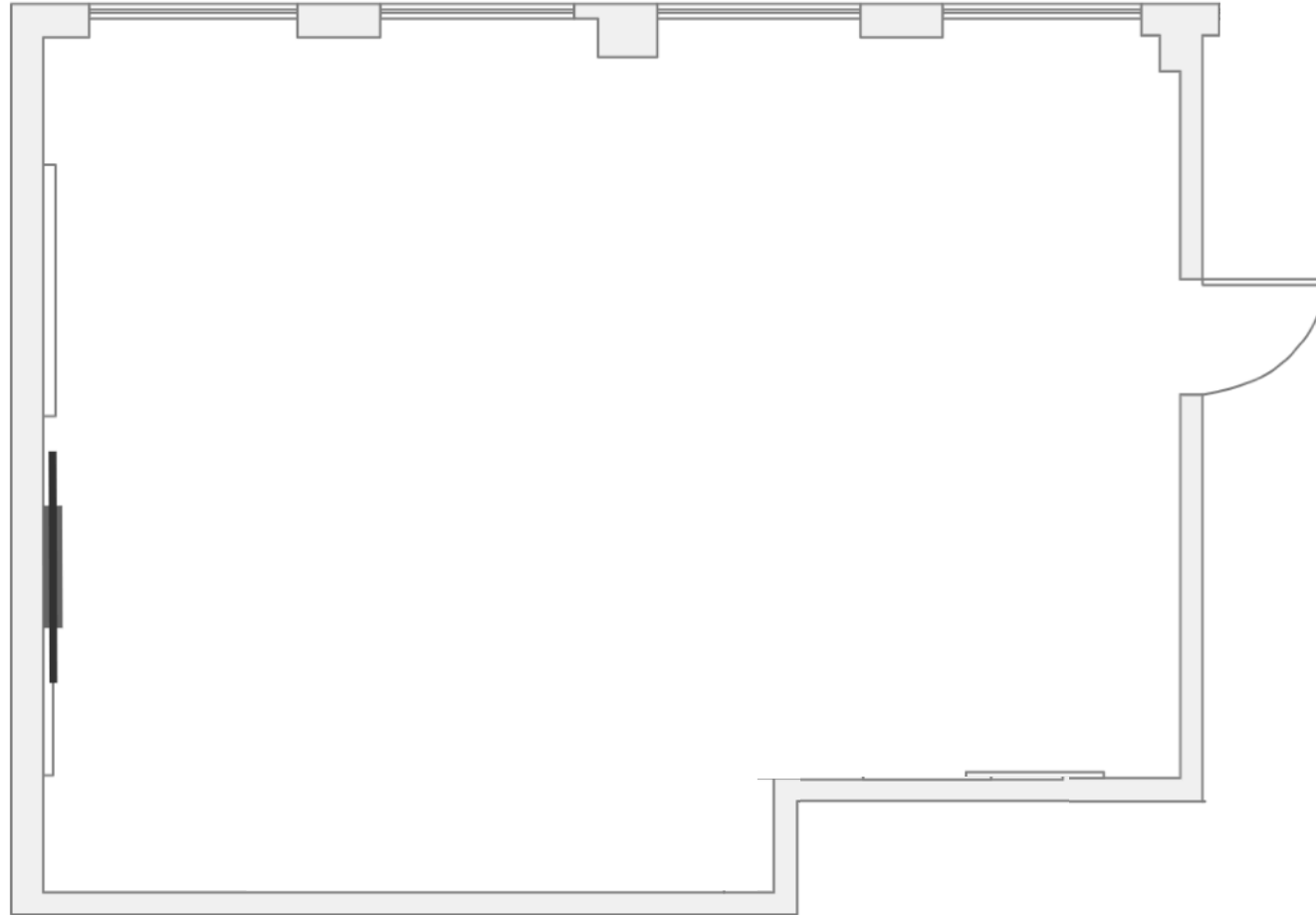


STANDARD 60PAX



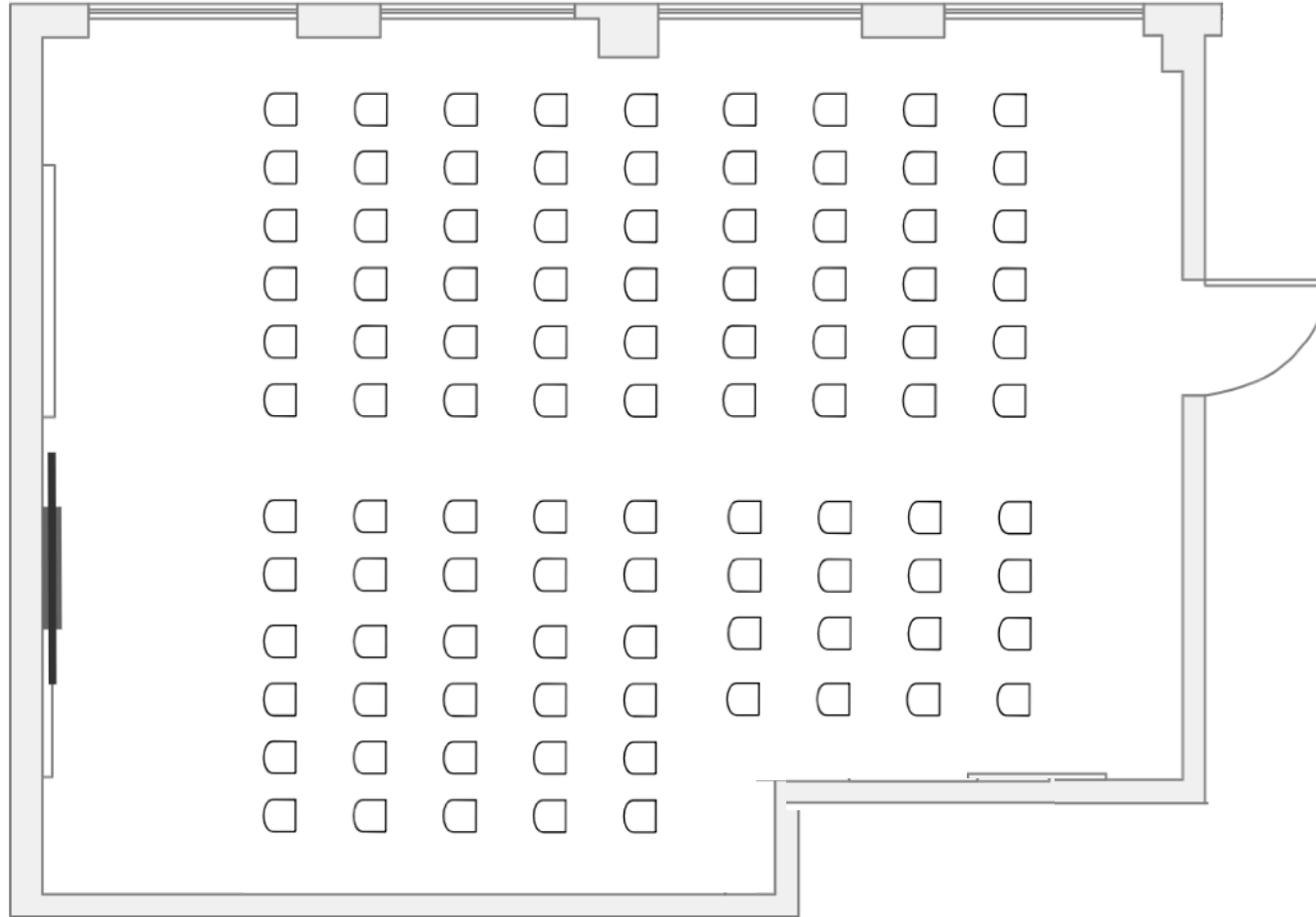
FLOOR PLAN OPTION

COCKTAIL 120PAX



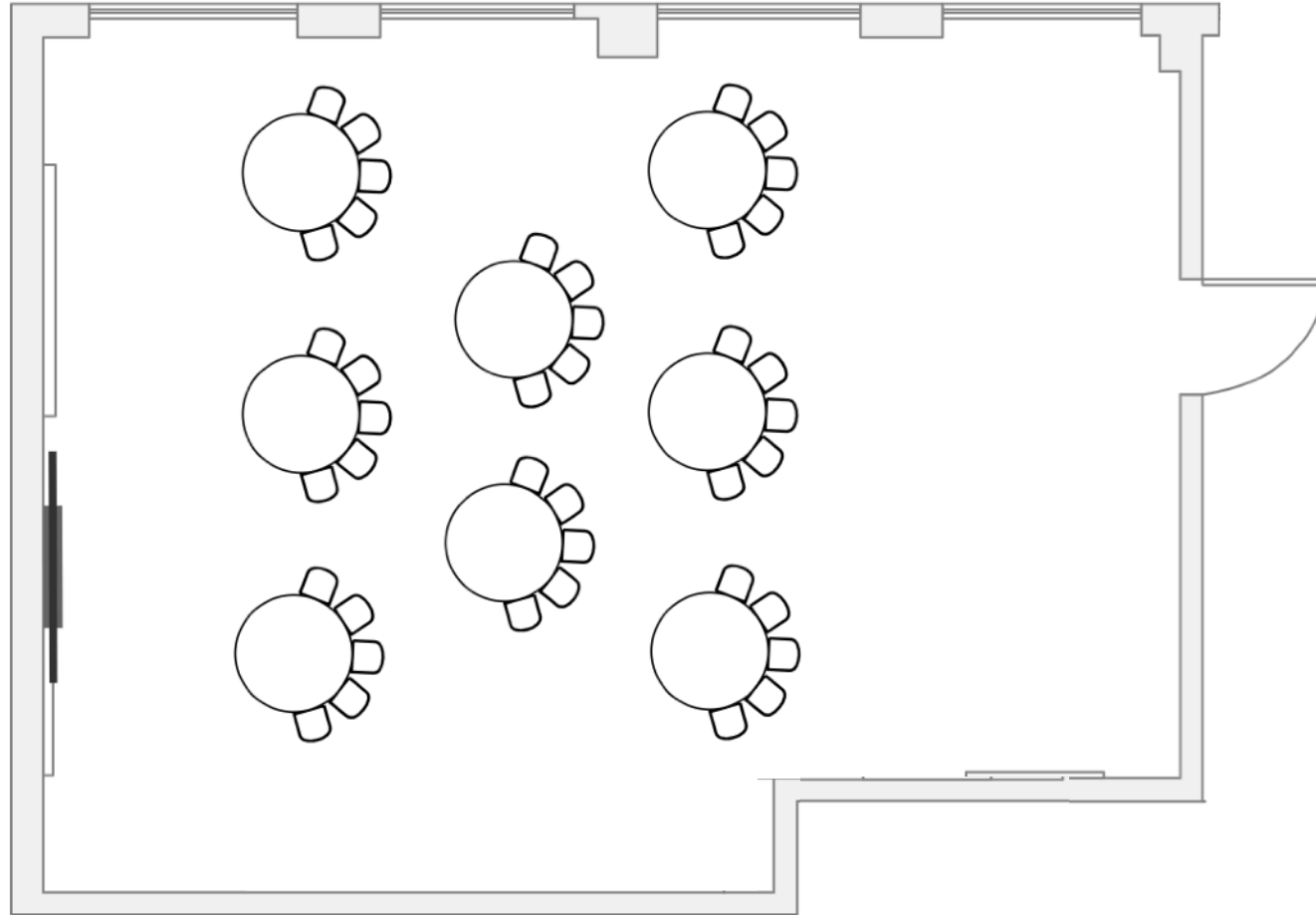
FLOOR PLAN OPTION

THEATRE STYLE 100PAX



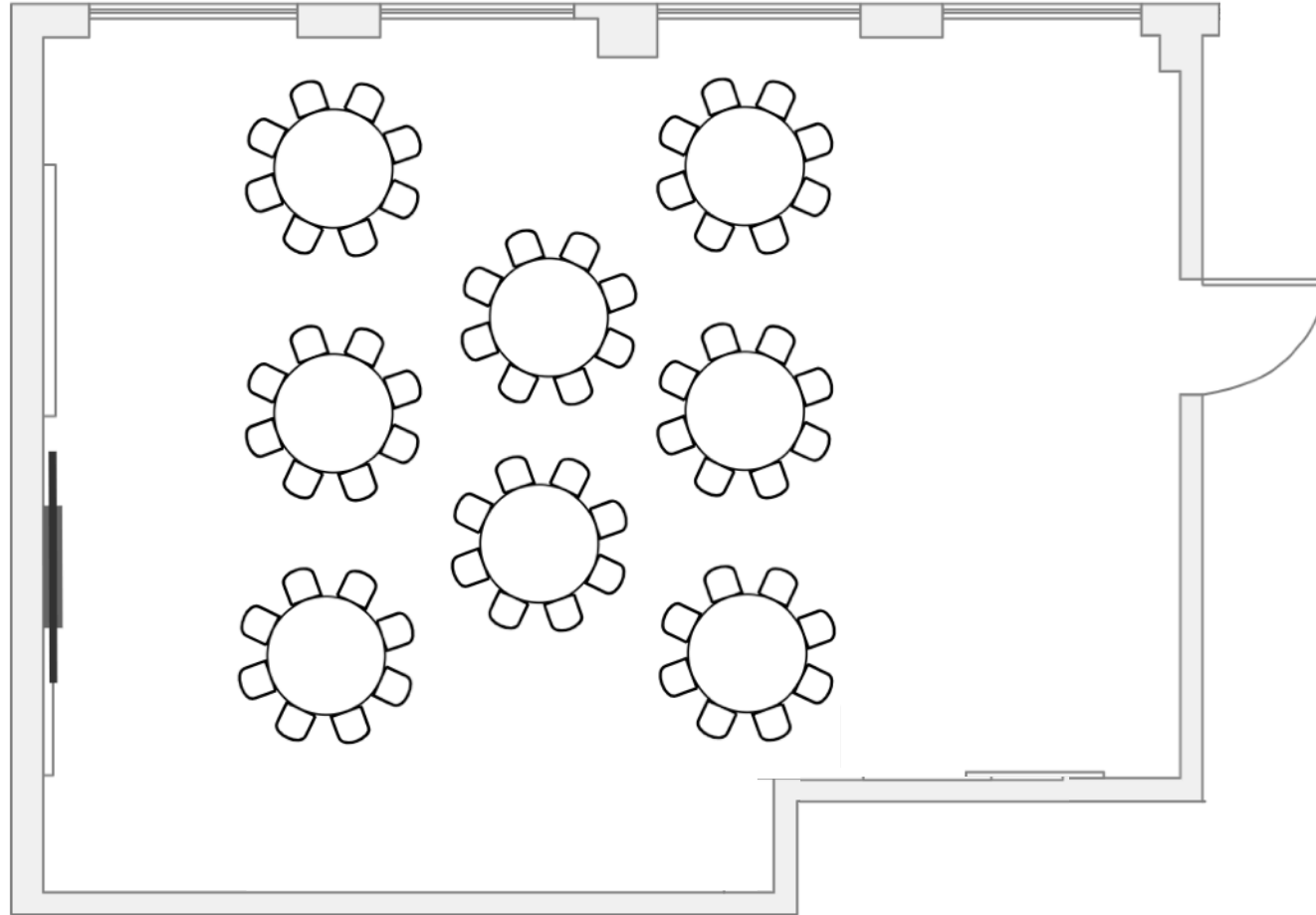
FLOOR PLAN OPTION

CABARET ROUNDS 40PAX



FLOOR PLAN OPTION

BANQUET ROUNDS 64PAX



FLOOR PLAN OPTION



FURNITURE

Sleek custom designed lounge furniture is available for use, and included in venue hire.

Should you require any additional furniture, you are welcome to arrange this yourself via our recommended suppliers and partners who know the venue well.

INVENTORY

- 10 x Trestle tables (see next column regarding linen)
- 9 x Round banquet tables (see next column regarding linen)
- 3 x Wooden hightop cocktail tables
- 100 x Wooden back leather chairs

LINEN

It is recommended that linen is used to cover the trestle and round tables.

The MicDrop team are able to suggest a linen supplier.

AUDIO VISUAL

MicDrop



AUDIO VISUAL SYSTEM

AUDIO

- Clarity focused audio system, with in built delays and easy to use operation via a wall panel control screen
- 2 x handheld microphones
- 3.5mm or RCA audio input
- 2 x lapel microphones
- Apple AirPlay wireless playback
- PC/Android Miracast wireless playback

AV SYSTEM

\$300 inc gst, per day.

VISION

- 84" 4K screen
- HDMI input, aligned to audio
- Apple AirPlay wireless screen share
- PC/Android Miracast wireless screen share

CONTROL LOCATIONS

- HDMI port front of room, for easy presenter access
- Side of room for front of house operation
- Wireless iPad for roving control of audio and switching vision

FOOD + BEVERAGE

SERVED BY



FOOD + BEVERAGE

SERVED BY



MORNING / AFTERNOON TEA

(min 10 serves p/item)

Mini Muffins - \$4pp

A mixed selection served hot, from our oven (*V)

Mini Croissants - \$4.50pp

Served with butter & jam (*V)

Mixed Mini Danish Pastries - \$5pp

Inc. lemon curd, blueberry, apple & raspberry crown (*V)

Assorted Cookies & Sweet biscuits - \$3.50pp (*V)

Mixed slice bites - \$5pp (*V)

Muesli - \$7pp

Toasted muesli w/milk, yoghurt & honey (*V)

Fruit Platter - \$45pp

Serves 10

LUNCH

(min 10 serves p/item)

Sandwiches & Roti Wraps - \$12pp

Sandwiches, mixed & fresh cut (GF available on request)

Roti wrap - Chicken Tandoori (*EF)

Roti wrap - Roasted Veg (*V/EF)

Roti wrap - Chicken Parma (*EF)

Roti wrap - Chicken Basil (*EF)

Salad - \$9.50pp (min 10 serves)

Creamy Potato w/baby spinach leaves & mustard mayo dressing (*V)

Chickpea & Lentil Tabouli (*V/EF)

Fresh Greek with Olives & Feta (*V/EF/GF)

Quinoa & Roasted Pumpkin (*V/DF/EF)

Savoury

Fresh baked gourmet beef sausage rolls w/tomato & fruit relish **\$6.50pp**

Mini Beef & Red Wine Pies, short crust served with old school tomato/relish/chilli sauces **\$3.80 each**

Mini Spinach & Feta Pastries **\$3.80 each** (*V)

Fruit Platter - \$45 Serves 10 (*V/GF/DF/EF)

BEVERAGE

Tea & Coffee

Bespoke coffee & tea service from Timber & Greens cafe

Single serve tea or coffee **\$3.90 pp**

Half day unlimited **\$6pp**

Full day unlimited **\$10 pp**

Cold Pressed Orange Juice JUG - \$20 p/serve

Smoothies - \$8pp

**Catering order to be submitted 14 days prior to event date.
Final attendee total & dietary requirements due 7 days
prior to event date.**

All prices include GST and staffing for your event.

*V = Vegetarian

*GF = Gluten Free

*DF = Dairy Free

*EF = Egg Free

CATERING PACKAGES

SERVED BY



DELEGATE PACKAGES

Half day (morning tea + lunch or lunch + afternoon tea) **\$42.00 per/person**

Full day (morning tea + lunch + afternoon tea) **\$58.00 per/person**

FOOD MENU

MORNING & AFTERNOON TEA SELECTION (SELECT 2 ITEMS)

Mini Muffins (*V)
Mixed Mini Danish Pastries (*V)
Mini Croissants - served with butter & jam (*V)
Assorted Cookies & Sweet Biscuits (*V)
Mixed Slice bites (*V)
Fruit Platter (serves 10) (*V/GF)

*V = Vegetarian
*GF = Gluten Free
*DF = Dairy Free
*EF = Egg Free

Other Requirements, please enquire

LUNCH SELECTION (SELECT 2 ITEMS)

Sandwiches (mixed)
Roti Wrap - Chicken Tandoori
Roti Wrap - Roasted Veg (*V/EF)
Roti Wrap - Chicken Parma (*EF)
Salad - Creamy Potato & Mixed Leaf (*V)
Salad - Chickpea & Lentil Tabouli (*V/EF)
Salad - Fresh Greek w/ olives & feta (*V/EF/GF)
Salad - Quinoa & Roasted Pumpkin (*V/DF/EF)
Beef Sausage Rolls
Mini Feta & Spinach pastries (*V)
Mini Beef & Red Wine Pies

BEVERAGES

Served from Timber & Greens cafe

Bespoke Coffee & Tea Service

- Half Day
- Full day

ADDITIONAL OPTION

Cold Pressed Orange Juice Jug 750ml - \$20 p/serve

Catering order to be submitted 14 days prior to event date. Final attendee total & dietary requirements due 7 days prior to event date.

All prices include GST and staffing for your event.

RECOMMENDED SUPPLIERS

HIRE EQUIPMENT

Should you require additional furniture, catering equipment, glassware etc for your event then we recommend our hire partner Harry The Hirer. You are also welcome to organise through your own supplier should you prefer.

CATERING

Cubes3122 features access to a communal kitchen, sink, hot and cold running water and power outlets. We recommend our catering partner Cookes Food who can assist with all types of event catering styles or feel free to organise your own.

ADDITIONAL AV EQUIPMENT

Should you require any additional AV equipment we recommend Technical Events who will be able to assist you with all types of AV set ups in our space.

LINEN HIRE

For linen to cover round table and trestles we recommend Simmons Linen Hire.



Craig Garrow
Harry The Hirer

CraigG@harrythehirer.com.au
03 9429-8688
www.harrythehirer.com.au



Elaina Ware
Cooques Food

elaina@cookesfood.com.au
0404 205 295
www.cookesfood.com.au



David Wailes
Technical Events

dave@technicalevents.com.au
03 9372 6886
www.technicalevents.com.au



Simmons Linen

info@linenhiredi.com.au
03 9500 2499
www.simmonslinenhire.com.au



NEED TO KNOW VENUE INFO

CONTACT

cubes3122@creativecubes.co

7 DAYS

Cubes3122 is available 7 days a week from 8:00am - 12:00am.

RESTROOMS

Male and female restrooms as well as separate accessible restroom.

HEATING & COOLING

Keep your guests comfortable throughout the day with in house heating & cooling system.

LOADING ACCESS

Load is either directly via front doors of building, or via the below ground car park. Please discuss your needs with the Cubes3122 team to find the best option.

ADDRESS

10 Oxley Road
Hawthorn
VIC 3122

STREET PARKING

Along Glenferrie Road & Oxley Road, fees apply

PAID PARKING

Directly opposite Cubes3122 is large paid parking facility, local council managed.

TRAIN

Glenferrie Station

TRAM

Route 16
Manningtree Road Stop
Manningtree Road / Glenferrie Rd Stop



LOOKING FOR A DIFFERENT VENUE?

INTRODUCING CUBES3121 RICHMOND

A brand new industrial chic event space, Cubes3121 is located within the CreativeCubes.Co building at 534 Church St, Richmond.

The space features a polished concrete floor, exposed brick and timber panelled walls with plenty of natural light through windows down the length of the space.

With 120sqm including a stage, dimmable lighting, connected kitchen facilities, connected breakout boardroom and dedicated high speed wifi network. The event space is ideal for workshops, team meetings, presentations, briefings and product launches.

If you are looking for an event space that inspires and isn't your run of the mill venue, Cubes3121 is the place.

NEED TO STRETCH?

YOGA BY

**REBEL
MONK**



REBEL MONK

Rebel Monk is a state-of-the-art Yoga studio at CreativeCubes.Co Hawthorn, with 44 weekly classes.

Options are available to add a dedicated yoga session to your event. Alternatively guests can join a regular class with an hour of focused movement, breathing and relaxation.

With thirty mat spaces, spa-quality changing rooms and talented teachers who bring everything they've got. Rebel Monk can add value to anyone's day. Your guests will be relaxed into their most creative and productive mindset, ready for everything you have in store for them.

Get centred. Get balanced. Get focused. Get real. And get ready for a more kick-ass version of you.

This is Rebel Monk.

