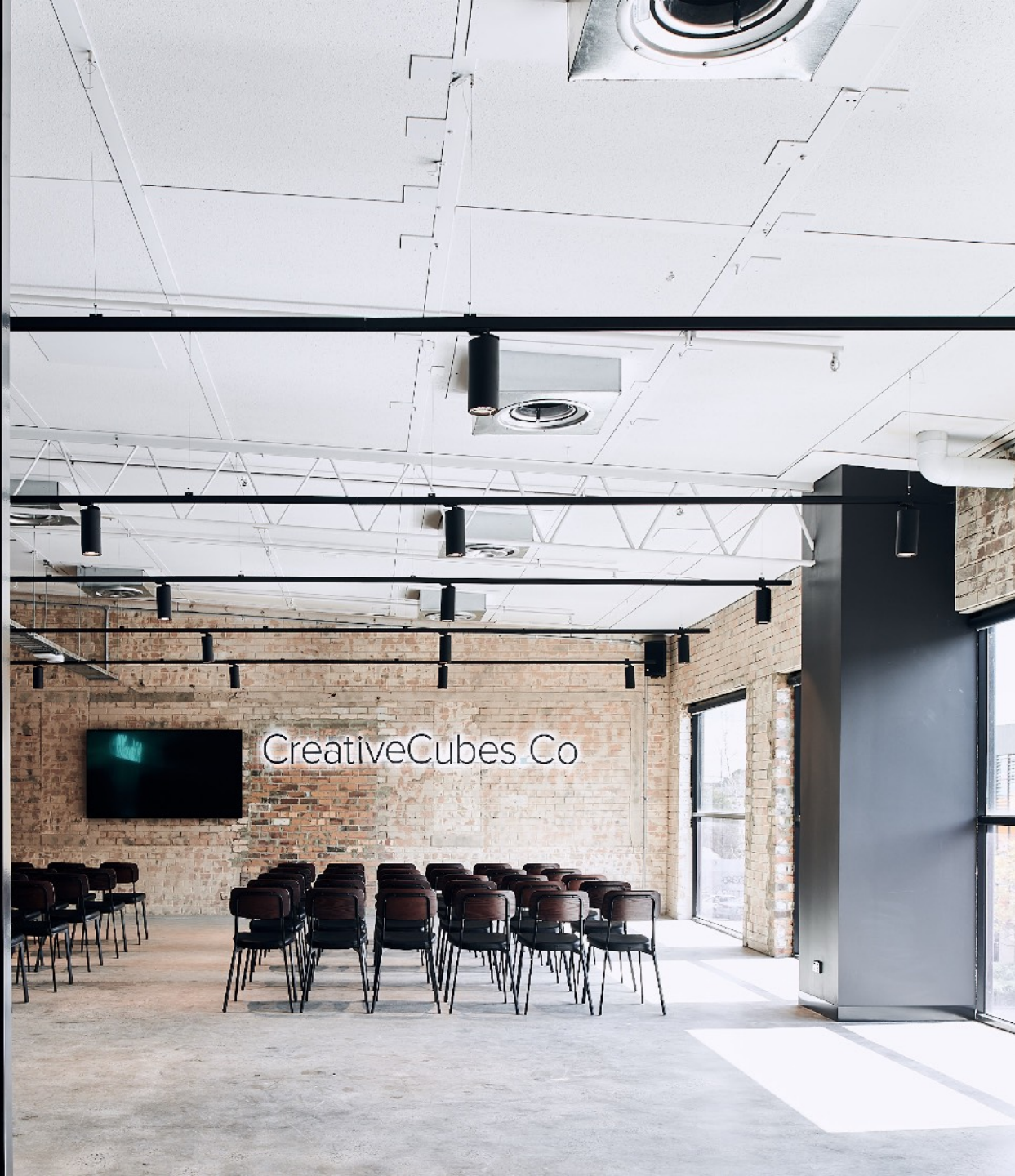


A red wavy line graphic that starts on the left, loops around the word 'HAWTHORN', and extends to the right.

HAWTHORN

MicDrop

VENUE INFORMATION PACK



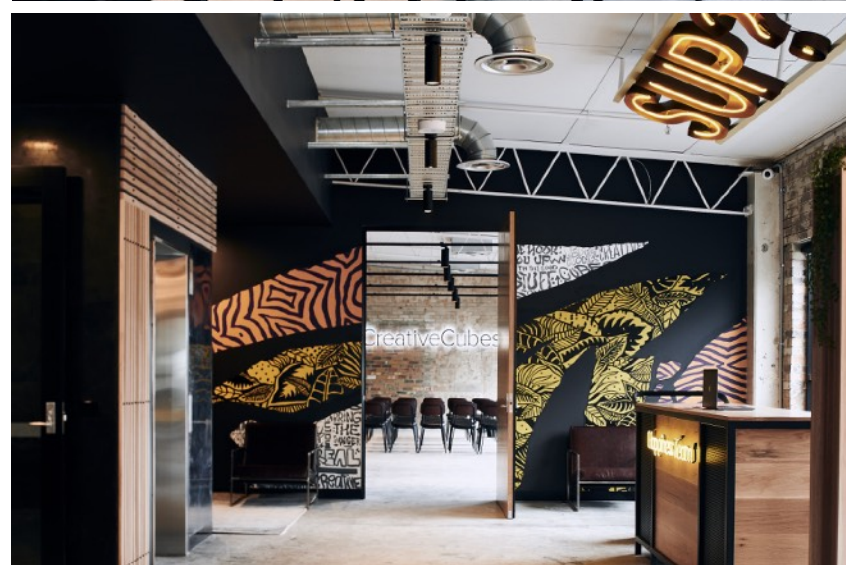
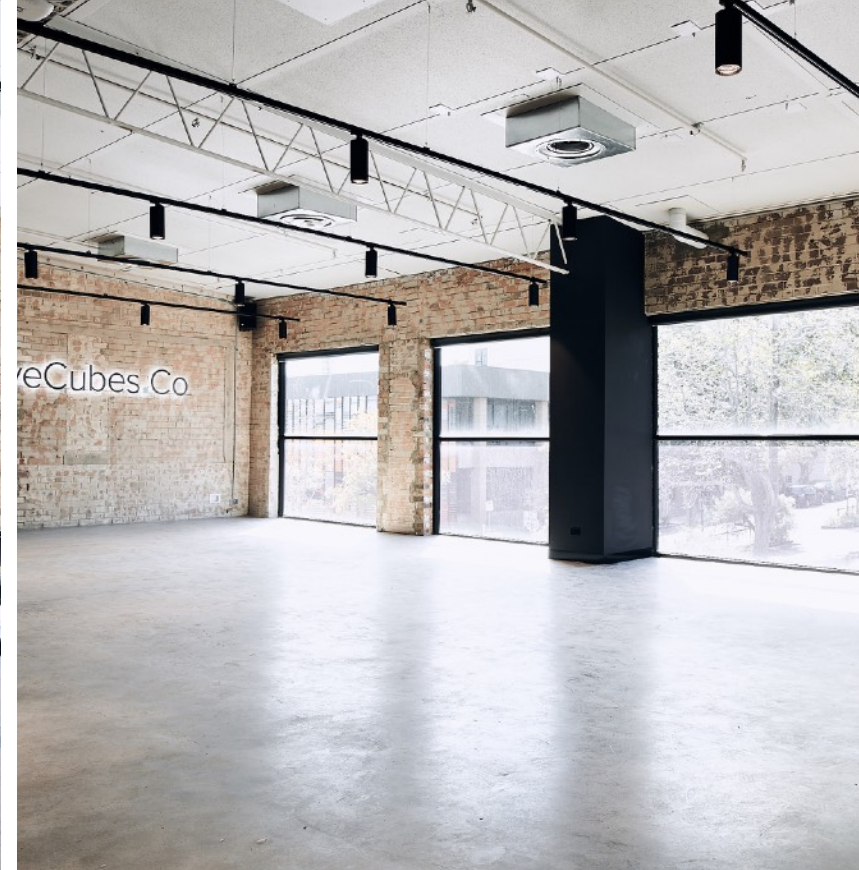
GOTHAM CITY SWAGGER. HAWTHORN COOL.

This ain't your Aunt Edna's Hawthorn. MicDrop Hawthorn brings Gotham City swagger to Melbourne's leafy inner east. Exposed brick and industrial-chic accents provide the perfect backdrop for events that will linger longer in people's memories.

Along with all the cutting-edge event-tech you'd expect from a space this fly, the 145sqm room includes dimmable lighting and blazing fast wifi, as well as breakout boardroom and meeting rooms for when you just can't contain all your good ideas in one space.

And to keep your team fuelled, catering partner Timber + Greens is on hand to curate and serve healthy, wholesome, delicious food sourced from local and (where possible) certified organic producers. Their coffee is out of this world too.

Ideal for workshops, team meetings, brainstorming and briefings, presentations and product launches. Not suitable for sheep shearing, drumming circles or anything boring.



FLOOR PLAN



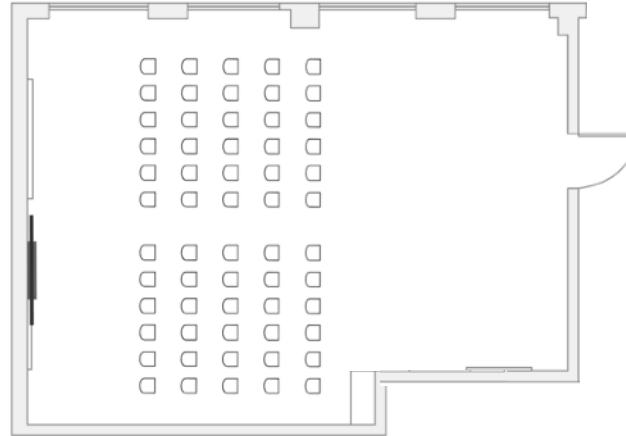
FLOOR PLAN OPTIONS

CAPACITY

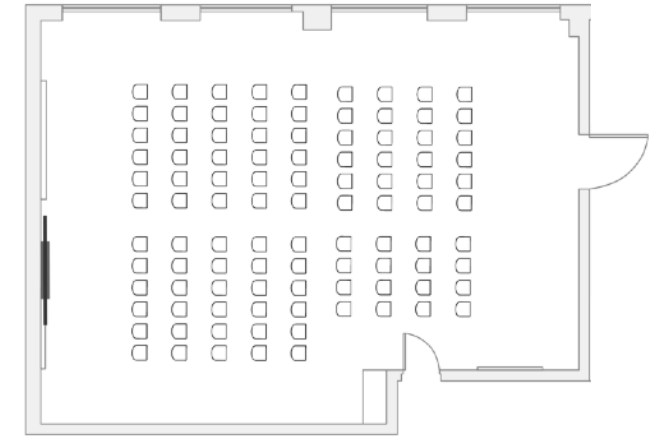
Cocktail	150
Theatre	100
Banquet Rounds	48
Cabaret Rounds	40

THEATRE 60PAX

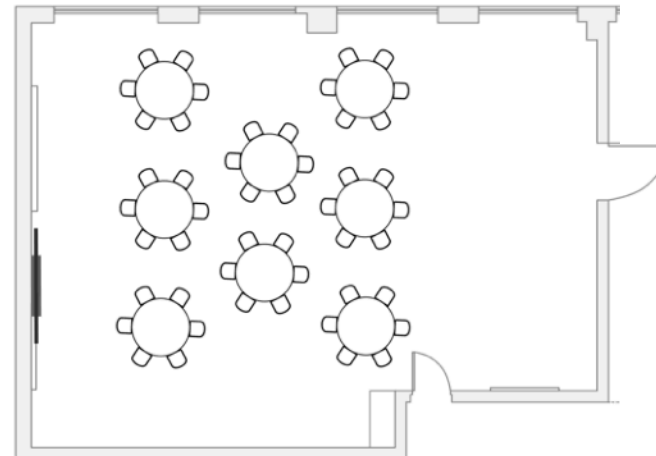
(VENUE DEFAULT)



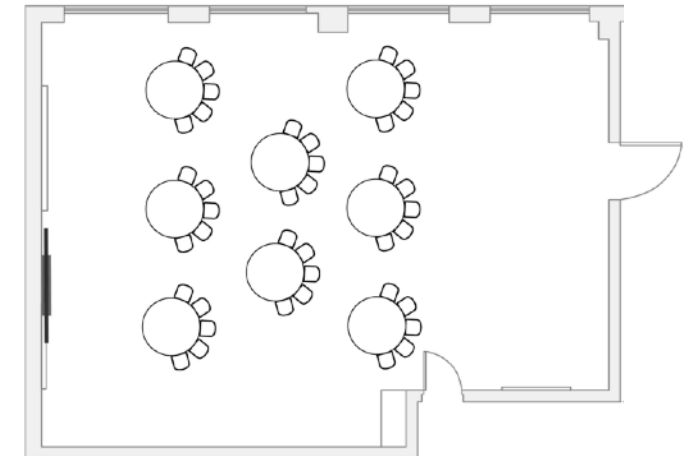
THEATRE 100PAX



BANQUET 48PAX



CABARET 40PAX



AUDIO VISUAL SYSTEM

We have designed a plug & plug AV system to make your experience a breeze. With side stage HDMI access for presenter use. Use of the AV system is \$300 p/day.

AUDIO

- 2 x handheld microphones
- 3.5mm or RCA audio input
- 2 x lapel microphones
- Apple AirPlay wireless playback
- PC/Android Miracast wireless playback

FURNITURE

Sleek custom designed lounge furniture is available for use, and included in venue hire. Should you require any additional furniture, you are welcome to arrange this via our recommended suppliers who know the venue well.

INVENTORY

- 10 x Trestle tables (see note regarding linen)
- 9 x Round banquet tables (see note regarding linen)
- 3 x Wooden hightop cocktail tables
- 100 x Wooden back leather chairs

VISION

- 84" 4K screen
- HDMI input, aligned to audio
- Apple AirPlay wireless screen share
- PC/Android Miracast wireless screen share

LINEN

It is recommended that linen is used to cover the trestle and round tables.

MicDrop recommend Simmons Linen Hire, we are able to assist with all the essential information to place an order.

RECOMMENDED SUPPLIERS

HIRE EQUIPMENT

Should you require additional furniture, catering equipment, glassware etc for your event then we recommend our hire partner Harry The Hirer. You are also welcome to organise through your own supplier should you prefer.



Craig Garrow

craigg@harrythehirer.com.au
03 9429-8688
harrythehirer.com.au

ADDITIONAL AV EQUIPMENT

Should you require any additional AV equipment we recommend Technical Events who will be able to assist you with all types of AV set ups in our space.



David Wailes

dave@technicalevents.com.au
03 9372 6886
technicalevents.com.au

LINEN HIRE

For linen to cover round table and trestles we recommend Simmons Linen Hire.



info@linenhiredi.com.au
03 9500 2499
simmonslinenhire.com.au

NEED TO KNOW VENUE INFO

CONTACT

cubes3121@creativecubes.co

7 DAYS

MicDrop Richmond is available 7 days a week from 8:00am - 12:00am.

RESTROOMS

Dedicated male and female restrooms as well as separate accessible restroom

HEATING & COOLING

Keep your guests comfortable throughout the day with full in house heating & cooling.

LOADING BAY ACCESS

ADDRESS

10 Oxley Road
Hawthorn
VIC 3122

TRAIN

Glenferrie Station

TRAM

Route 16
Manningtree Road Stop
Manningtree Road / Glenferrie Rd Stop

STREET PARKING

Along Glenferrie Road & Oxley Road, fees apply

PAID PARKING

Directly opposite Cubes3122 is large paid parking facility, local council managed.





**LOOKING FOR
A DIFFERENT VENUE?**

INTRODUCING MICDROP RICHMOND

MicDrop Richmond is quintessentially Richmond. Chic, hip, versatile and oh-so very innovative. With its polished concrete floor, exposed brick walls, and abundant natural light, it's a space that's designed to elevate your corporate event from 'meh' to mesmerising.

The 120sqm room includes a stage, dimmable lighting, breakout boardroom and high-speed wifi. There's even a connected kitchen to keep those celebratory end-of-event bevies nice and cold.

Ideal for workshops, team meetings, brainstorming and briefings, presentations and product launches. Not suitable for bingo, weddings, Bar Mitzvahs, engagement parties or anything boring.



NEED TO STRETCH? YOGA BY

REBEL MONK

Rebel Monk is a state-of-the-art Yoga studio at CreativeCubes.Co Hawthorn, with 44 weekly classes.

Options are available to add a dedicated yoga session to your event. Alternatively guests can join a regular class with an hour of focused movement, breathing and relaxation.

With thirty mat spaces, spa-quality changing rooms and talented teachers who bring everything they've got. Rebel Monk can add value to anyone's day. Your guests will be relaxed into their most creative and productive mindset, ready for everything you have in store for them.

Get centred. Get balanced. Get focused. Get real. And get ready for a more kick-ass version of you.

This is Rebel Monk.

Contact hawthornerebelmonk.co for more information.





**INCREASE YOUR
EVENT IMPACT**

EXCLUSIVE GROUP SESSION

**AT THE HOTTEST NEW
WORKOUT STUDIO IN
HAWTHORN**

GET TO THE HEART OF FITNESS



Our technology connects your heart to your workout.



Our heart rate zones tell you when to push harder. And when not to.



Our coach-led workouts are specifically designed to get the most out of your 60 minutes.



03 8579 1975

studiomanager013@orangetheoryfitness.com.au

*Visit [Orangetheoryfitness.com.au/terms-of-use](https://www.orangetheoryfitness.com.au/terms-of-use) for more details, terms and conditions.